

Welcome to the January edition of the RVCP Volunteer Newsletter.

We would like to start the year with a huge thank you to everyone that volunteers across the park. We have over 130 regular volunteers who help throughout the year. Some people volunteer weekly, others help on an ad hoc basis as and when it fits with their lifestyle. We are deeply appreciative of all the time people volunteer with us.

Look what has been achieved in 2019.

Since January 2019, we have welcomed

- 13 primary schools – 591 pupils
- 1 outreach primary school presentation - 90 pupils
- 1 secondary school – 15 pupils
- 1 college further education group – 38 students
- 12 adult education groups – 222 people
- 1 youth group – 21 Beavers

to the Chapel for education sessions including workshops, talks and tours.

The feedback has been overwhelmingly positive, including comments like:

- The children absolutely loved the role play. It was both informative and fun. The kids learnt lots from it and have retained a lot of information.
- It was all suitable for the children and has inspired them.
- We had the most wonderful day. We enjoyed learning all the jobs carried out by the different people and acting out their daily roles.
- It was most enjoyable and another of our teachers would like to bring her class.
- Our two lovely guides, Jackie and Pam, gave us a most interesting and informative tour of the Chapel and Tower. We all thoroughly enjoyed our visit.
- Our thanks to Jill for giving us such a lively and informative introduction to the history of the RVH.
- All the children had an absolutely fantastic time and learnt so much! It was such an informative, interesting and incredibly fun day!



Welcome Host Training—Grab your spot!

Tuesday 11th February 2020

This half day course has been designed specifically for volunteers who come into contact with members of the public while at work and will help participants to improve their customer service and communications skills.

You can attend a session either in the morning or on the afternoon. There will be cake!

Sessions times are:

9.30am – 12.30pm or 1.00pm – 4.00pm

Please book a morning or afternoon sessions with
joanne.basham@hants.gov.uk

Help needed in the Park Shop

The park shop are looking for help during the February half term from 14 February - 23rd March 2020.

Tasks will involve welcoming visitors to the site and assist with providing customer service, care and security for the benefit of our visitors and the local community.

Tasks and duties

- Assist with retail sales, cash handling, promoting events and other activities
- Helping to keep the shops stocked and ensuring leaflets displayed and notice boards are up to date.

For more information either email Jo or pop into to see Donna in the shop.

joanne.basham@hants.gov.uk

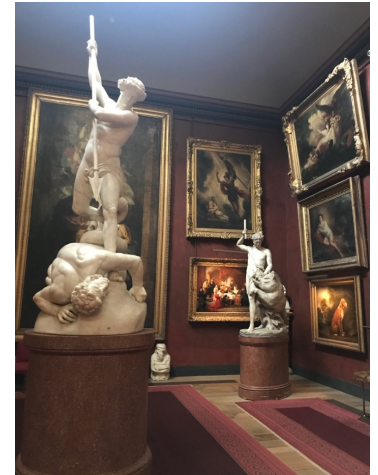
Volunteer Christmas Event 2019

A few snaps of the volunteer Christmas party. A fun evening of quizzes, mulled wine and a very competitive spaghetti, marshmallow building game.



Volunteer trip to Petworth

Thank you to everyone who came on the trip to Petworth House and Gardens on Monday 13th January. It was interesting to chat to the volunteers at the venue and understand their involvement in the operation of the house. We took away a variety of great lessons from our visit and quite a few blurry coach photos.



Duke of Edinburgh Award

We would like to congratulate Lila and Marcus for being our first young people to complete their 30 hours of volunteering at The Chapel. Their volunteering hours have formed part of their challenge in under taking the Duke of Edinburgh Bronze Award. They were a welcome addition to the team.



Friends of the Park

On Friday 21st February there will be a planting of a new Cedar of Lebanon tree. The tree has kindly been donated

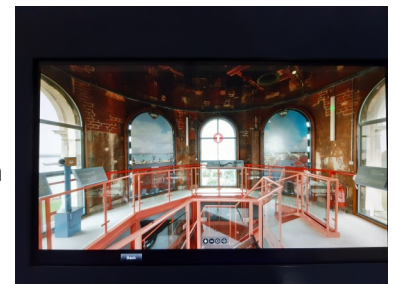


by funds from The Friends of The Park to replace the tree taken down in 2019. The event will have free tree related activities – including paper pots, palettes, bark and leaf rubbings, scavenger hunt and making pine cone bird feeders.

The tree will be planted near to the Fairy Garden between 11am—2pm. We would like to say thank you to all the Friends of The Park that have made this possible.

InfoAktiv

As not all visitors are able to use the VR headset to view the virtual tour of the Chapel, InfoAktiv have come up with a solution for us using the touchscreen in the Chapel.



There is now an icon on the homepage of the touchscreen for Virtual Tours which takes you to links for the Balcony and Tower. You can use your finger to drag the screen to change the viewpoint and look left, right, up, down etc. On the pages for the Tower, clicking on the arrows at each window zooms you in to see the view from the window (on the day the photo was taken, not a live view). If a visitor comes in to the Chapel who is unable to climb the Tower, please show them how to access the Virtual Tours on the InfoAktiv. The 'On this Day' articles are now also available on the InfoAktiv tablet.

How to volunteer

To get involved at the Park email joanne.basham@hants.gov.uk or call 023 9224 4064 for an informal chat.